

**Anti-Cardiotrophin-1 Antibody**  
**Rabbit polyclonal antibody to Cardiotrophin-1**  
**Catalog # AP59528****Specification**

---

**Anti-Cardiotrophin-1 Antibody - Product Information**

Application	WB, IHC
Primary Accession	<a href="#">Q16619</a>
Other Accession	<a href="#">Q60753</a>
Reactivity	Human, Mouse, Rat, Monkey
Host	Rabbit
Clonality	Polyclonal
Calculated MW	21227

**Anti-Cardiotrophin-1 Antibody - Additional Information****Gene ID** 1489**Other Names**

Cardiotrophin-1; CT-1

**Target/Specificity**

Recognizes endogenous levels of Cardiotrophin-1 protein.

**Dilution**

WB~~WB (1/500 - 1/1000), IH (1/100 - 1/200)

IHC~~1:100~500

**Format**

Liquid in 0.42% Potassium phosphate, 0.87% Sodium chloride, pH 7.3, 30% glycerol, and 0.09% (W/V) sodium azide.

**Storage**

Store at -20 °C. Stable for 12 months from date of receipt

**Anti-Cardiotrophin-1 Antibody - Protein Information****Name** CTF1**Function**

Induces cardiac myocyte hypertrophy in vitro. Binds to and activates the ILST/gp130 receptor.

**Cellular Location**

Secreted.

**Tissue Location**

Highly expressed in heart, skeletal muscle, prostate and ovary. Lower levels in lung, kidney, pancreas, thymus, testis and small intestine. Little or no expression in brain, placenta, liver,

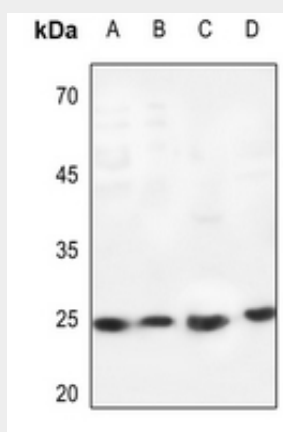
spleen, colon or peripheral blood leukocytes

### Anti-Cardiotrophin-1 Antibody - Protocols

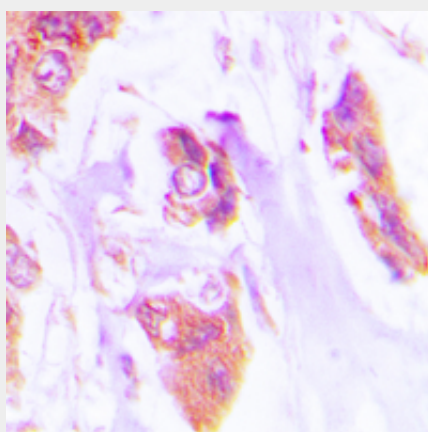
Provided below are standard protocols that you may find useful for product applications.

- [Western Blot](#)
- [Blocking Peptides](#)
- [Dot Blot](#)
- [Immunohistochemistry](#)
- [Immunofluorescence](#)
- [Immunoprecipitation](#)
- [Flow Cytometry](#)
- [Cell Culture](#)

### Anti-Cardiotrophin-1 Antibody - Images



Western blot analysis of Cardiotrophin-1 expression in Hela (A), mouse lung (B), rat lung (C), rat testis (D) whole cell lysates.



Immunohistochemical analysis of Cardiotrophin-1 staining in human lung cancer formalin fixed paraffin embedded tissue section. The section was pre-treated using heat mediated antigen retrieval with sodium citrate buffer (pH 6.0). The section was then incubated with the antibody at room temperature and detected using an HRP conjugated compact polymer system. DAB was used as the chromogen. The section was then counterstained with haematoxylin and mounted with DPX.

**Anti-Cardiotrophin-1 Antibody - Background**

KLH-conjugated synthetic peptide encompassing a sequence within the N-term region of human Cardiotrophin-1. The exact sequence is proprietary.